



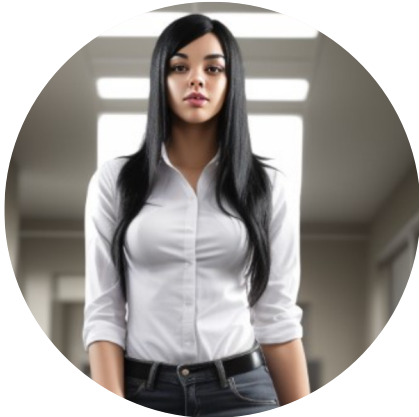
SARAH WHITE

Direct Support Professional

(555) 246-8901 

sarah.white@email.com 

Albany, NY 



PROFESSIONAL SUMMARY

Enthusiastic and caring Entry-Level Direct Support Professional eager to apply strong interpersonal skills and a passion for helping others. Ready to assist individuals with disabilities in their daily lives, fostering independence, and promoting community engagement.

EDUCATION

High School Diploma

Albany High School, Albany, NY

Graduated: June 2024

Professional Development

- Completed Direct Support Professional Training at Albany Care Network
- Participated in Positive Behavior Support (PBS) training
- Attended Disability Awareness Workshops at Albany Community Center

SKILLS

- Strong communication and interpersonal skills Expert
- Compassionate and patient with diverse populations Expert
- Ability to work well in a team environment Expert
- Reliable and responsible Expert
- CPR and First Aid Certified (anticipated) Expert

EXPERIENCE

Direct Support Professional Intern Albany Care Network, Albany, NY

June 2025 – July 2025

- Assisted experienced DSPs in providing daily care and support for individuals with developmental disabilities.
- Helped clients with basic needs, including dressing, grooming, and meal preparation.
- Supported individuals in participating in social and recreational activities.
- Documented daily activities and reported any concerns to senior staff.

Customer Service Associate Target, Albany, NY

March 2023 – May 2025

- Provided exceptional customer service, helping customers locate products and answering inquiries.
- Collaborated with a team to maintain a positive store environment.
- Assisted with stocking, organizing, and maintaining inventory.
- Trained new employees in customer service practices.